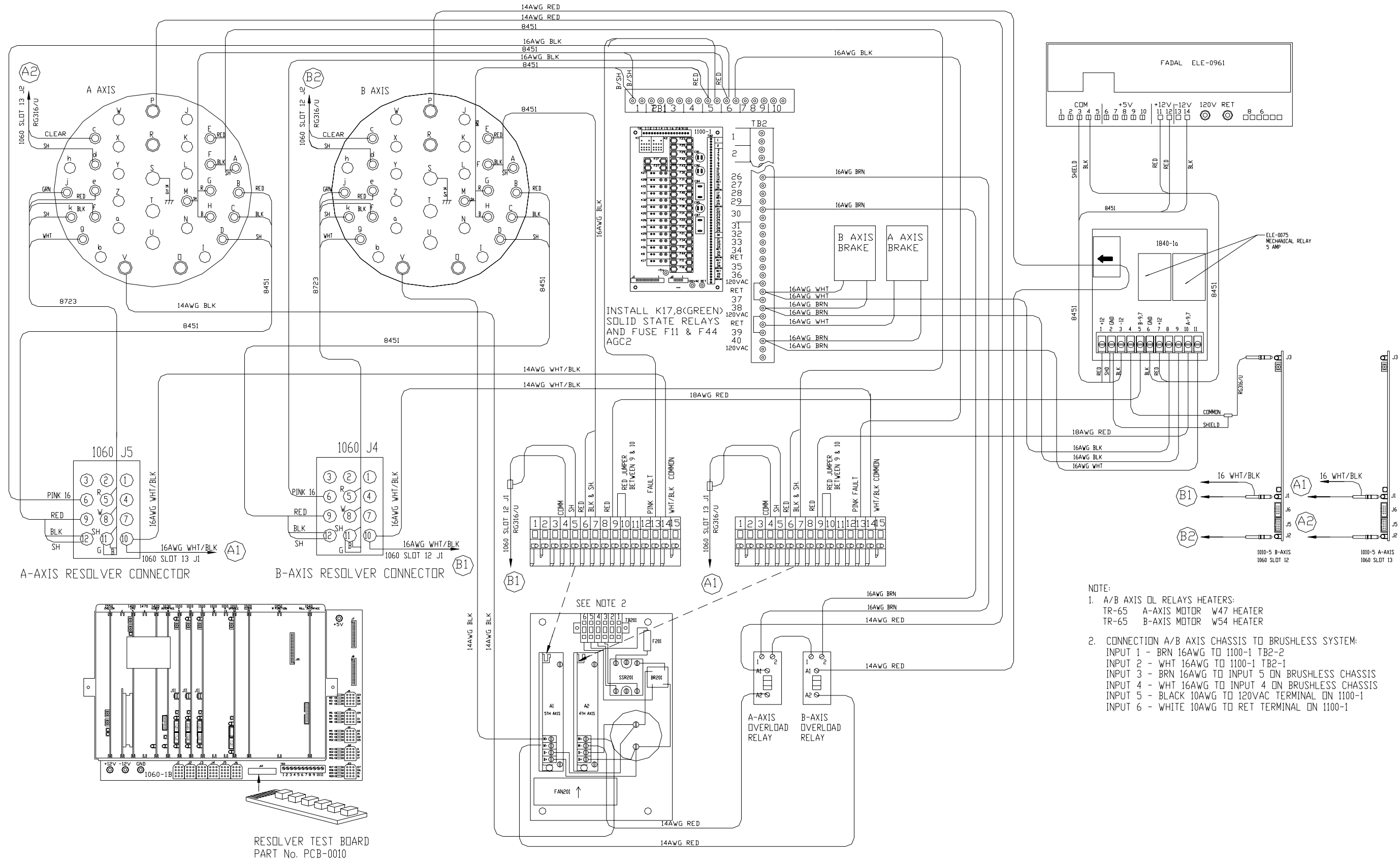


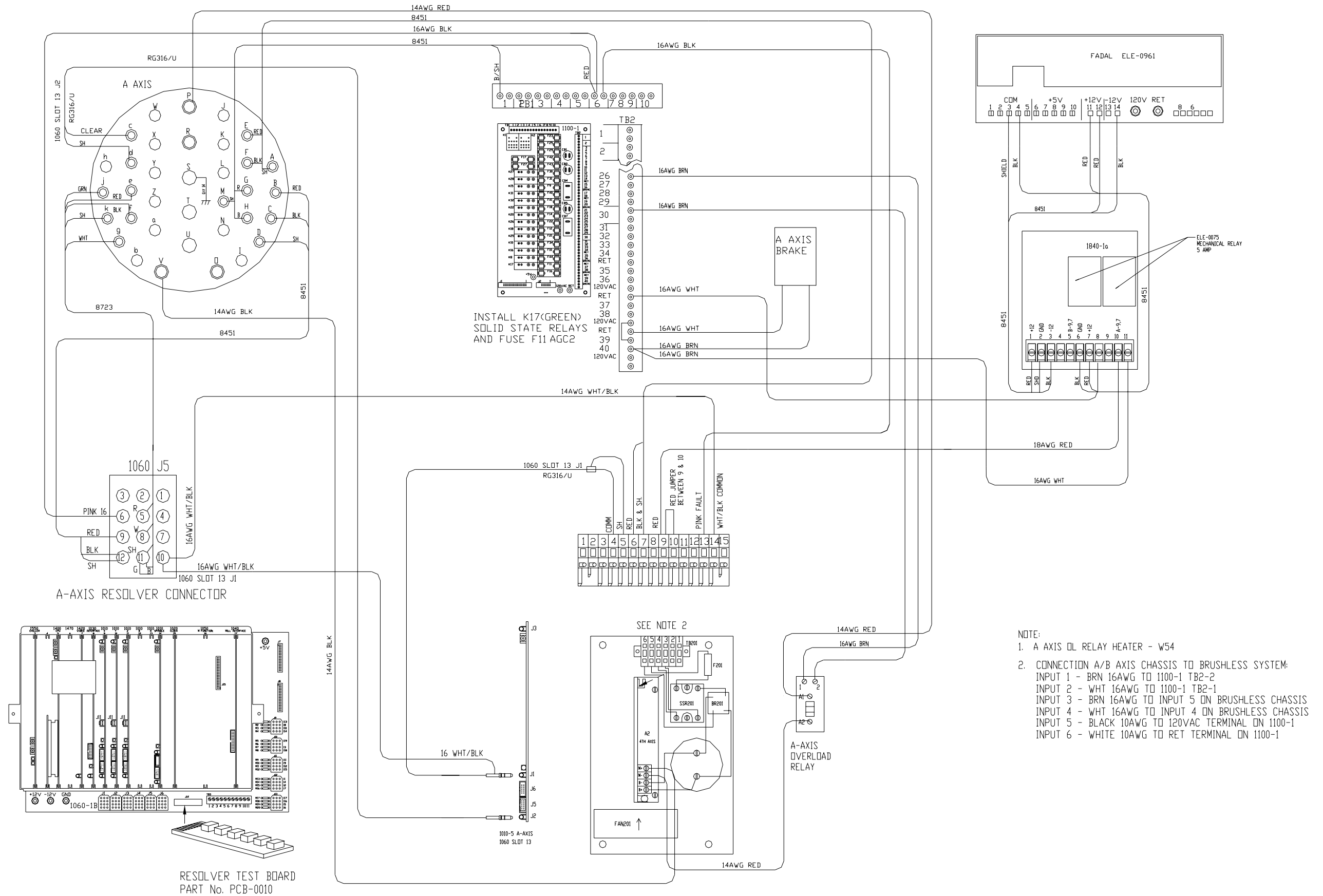
SECTION 3

4th & 5th Axis/Servo Options

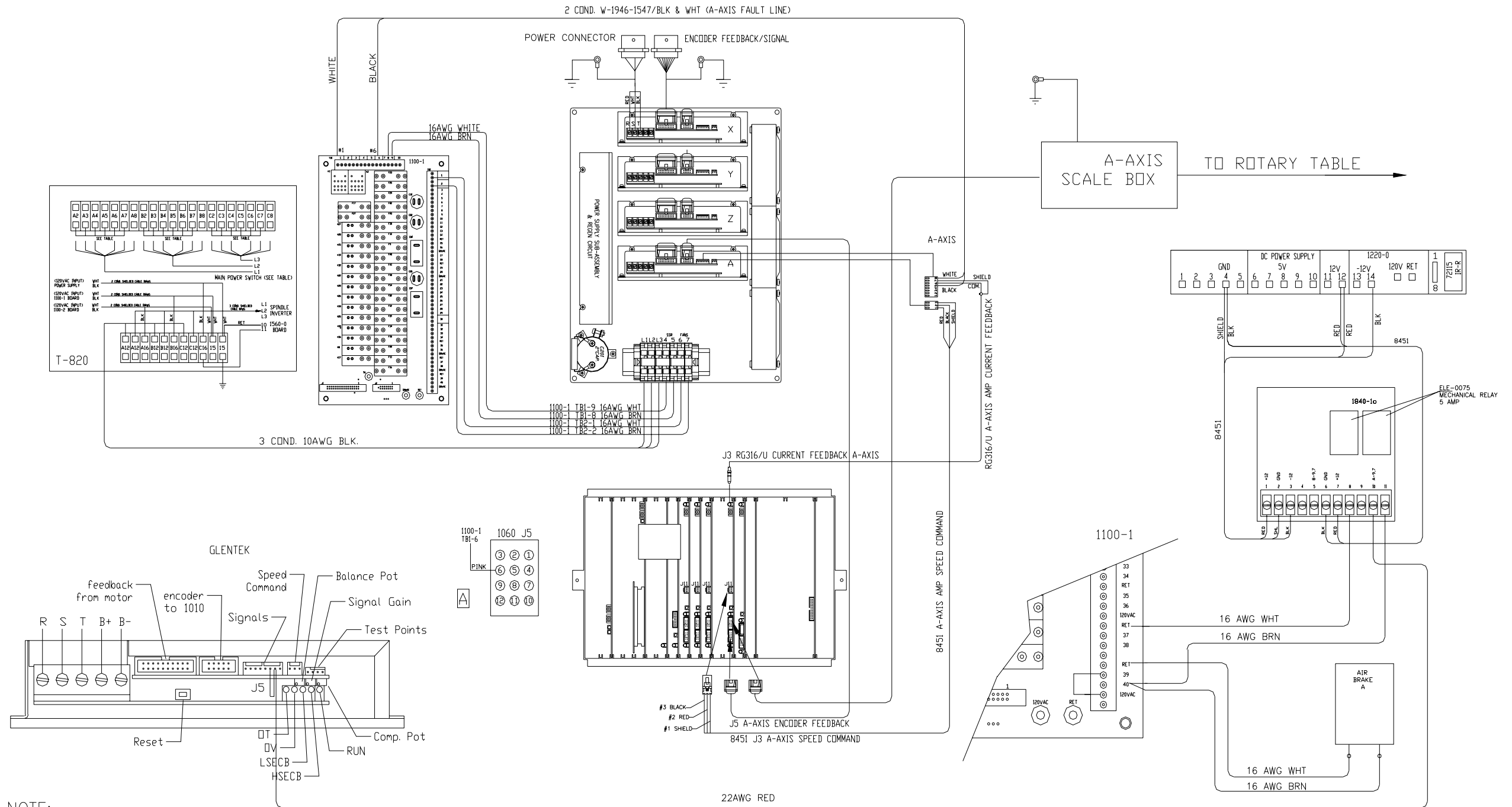


- NOTE:
1. A/B AXIS OL RELAYS HEATERS:
 TR-65 A-AXIS MOTOR W47 HEATER
 TR-65 B-AXIS MOTOR W54 HEATER
 2. CONNECTION A/B AXIS CHASSIS TO BRUSHLESS SYSTEM:
 INPUT 1 - BRN 16AWG TO 1100-1 TB2-2
 INPUT 2 - WHT 16AWG TO 1100-1 TB2-1
 INPUT 3 - BRN 16AWG TO INPUT 5 ON BRUSHLESS CHASSIS
 INPUT 4 - WHT 16AWG TO INPUT 4 ON BRUSHLESS CHASSIS
 INPUT 5 - BLACK 10AWG TO 120VAC TERMINAL ON 1100-1
 INPUT 6 - WHITE 10AWG TO RET TERMINAL ON 1100-1

Wrg_0034A_dc_4axis_for_ac



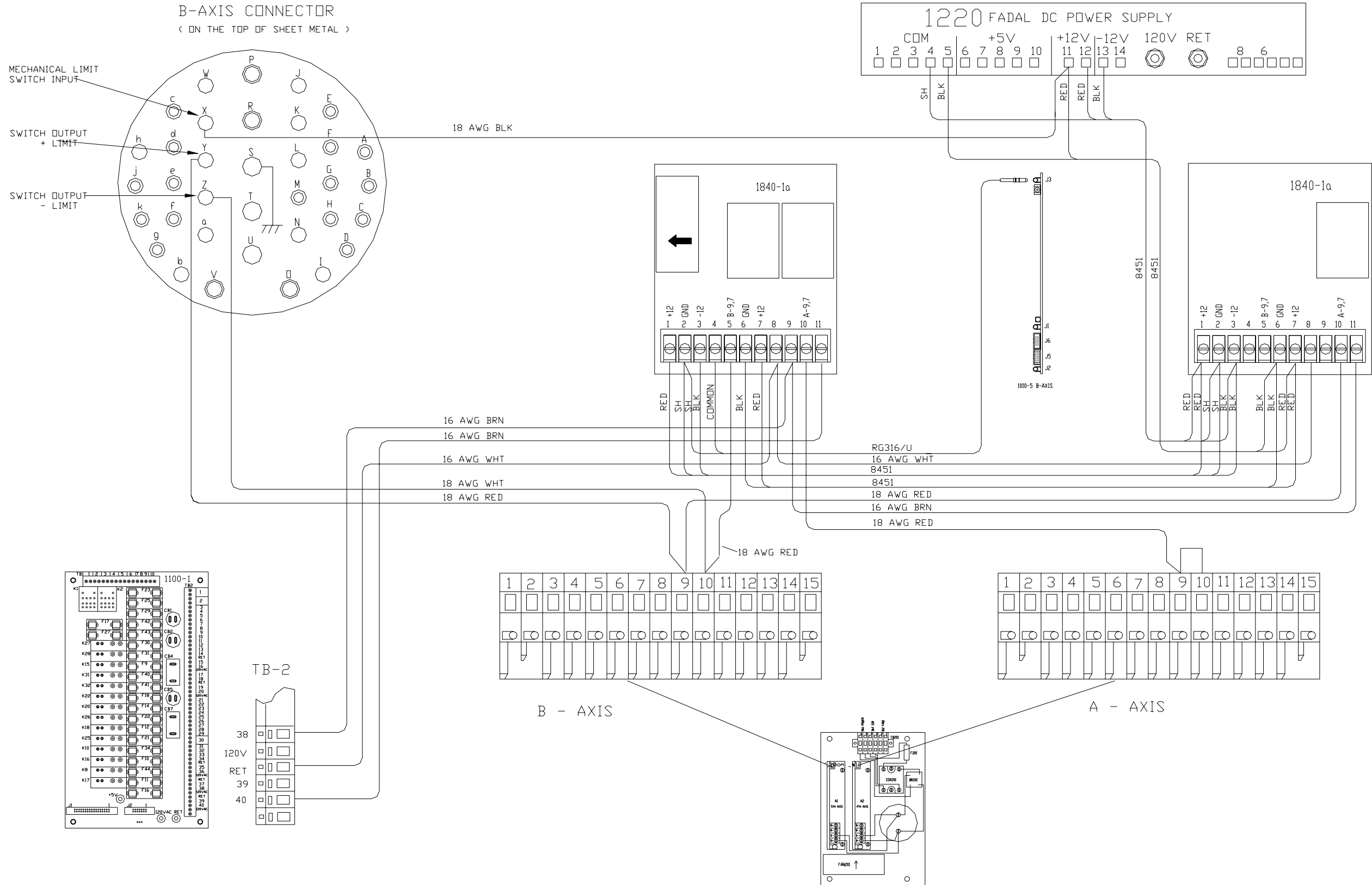
Wrg_0014C_ac_4th_axis_for_ac_brushless_std_slant98



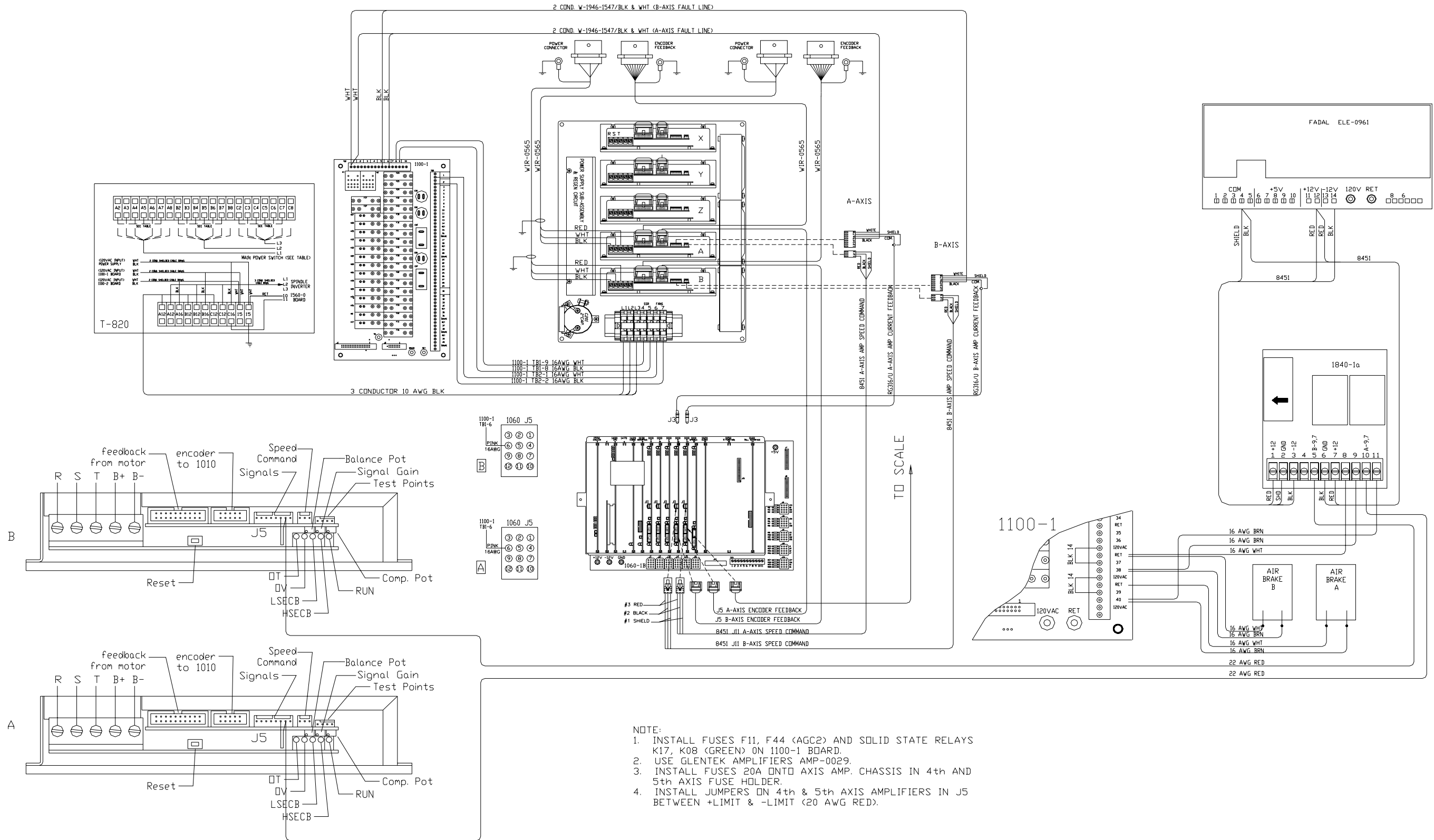
NOTE:

1. INSTALL FUSE F11 (AGC 2) AND SOLID STATE RELAY K17 (GREEN) ON 1100-1 BOARD.
2. USE GLENTEK AMPLIFIER AMP-0040 FOR V300 AND AMP-0029 FOR VH65.
3. INSTALL JUMPER ON 4th AXIS AMPLIFIER IN J5 BETWEEN +LIMIT & -LIMIT (20 AWG RED).
4. INSTALL FUSE 20A ONTO AXIS AMP. CHASSIS IN 4th AXIS FUSE HOLDER.
5. FOR V300 ROTARY TABLE INSTALL SCALE BOX.

Wrg_0015_4th_5th_with_mechanical_limit_switch

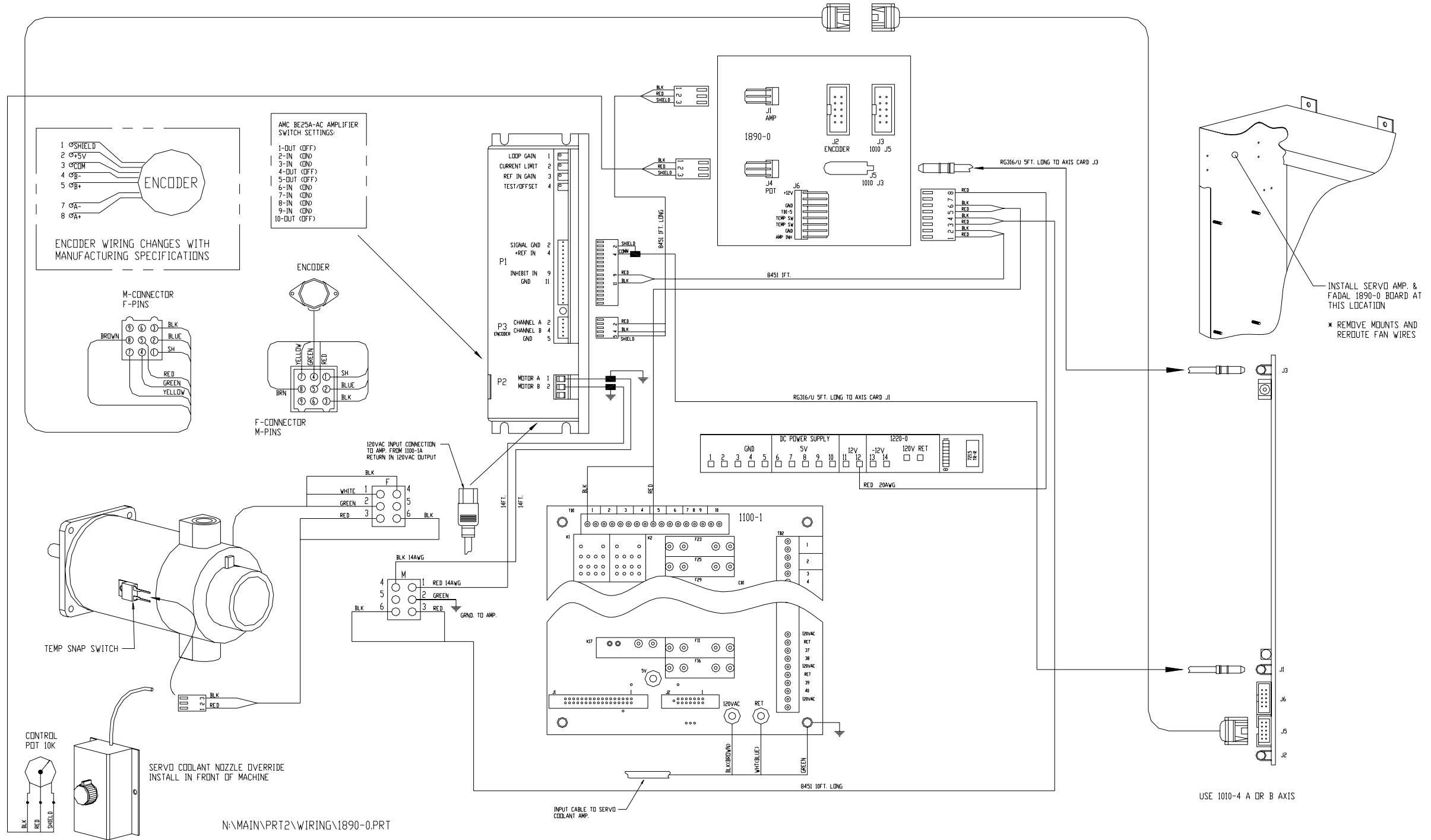


Wrg_0016B_ac_4th_5th_axis_for_ac_brushless_std_slant98

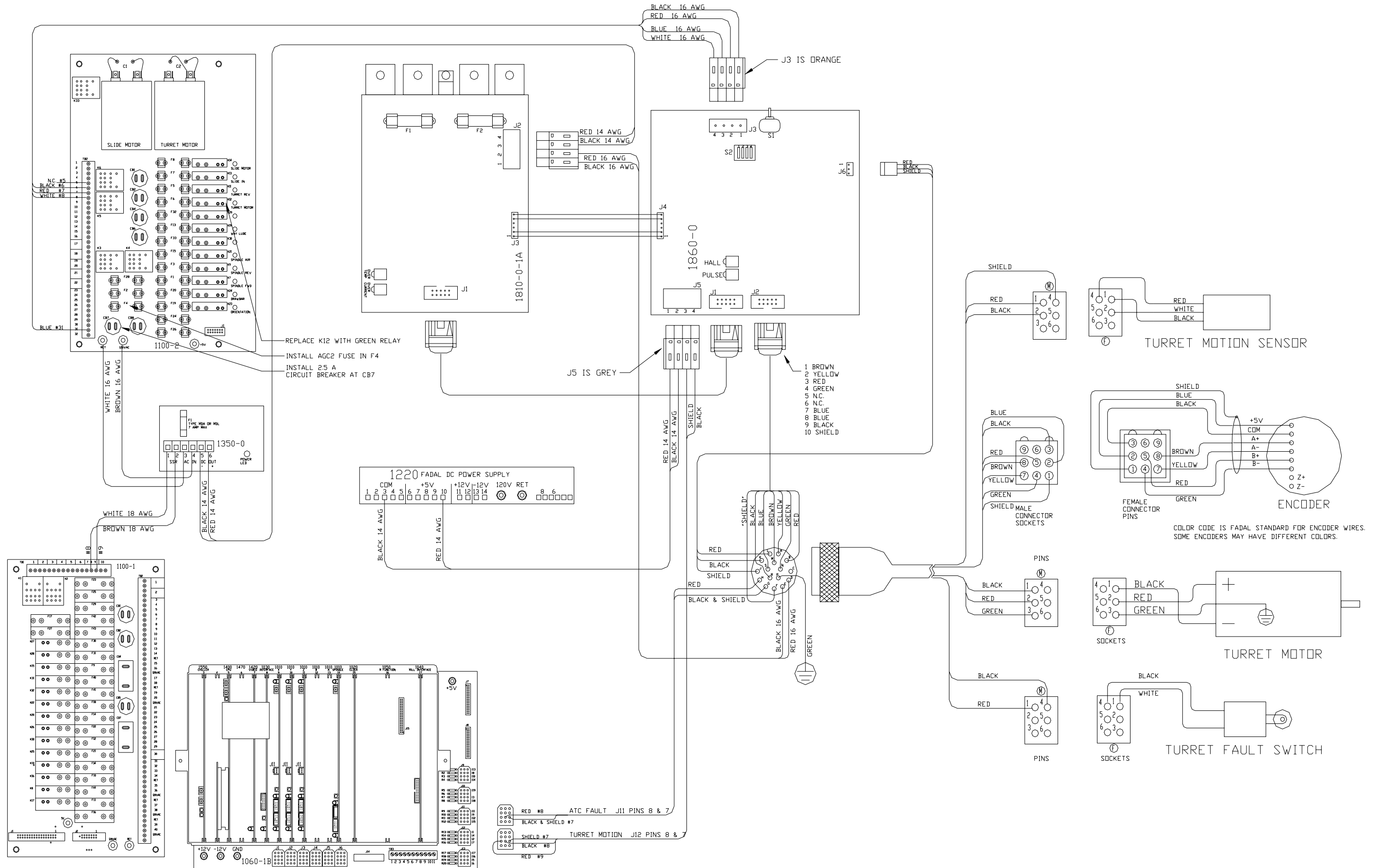


- NOTE:**
1. INSTALL FUSES F11, F44 (AGC2) AND SOLID STATE RELAYS K17, K08 (GREEN) ON 1100-1 BOARD.
 2. USE GLENTEK AMPLIFIERS AMP-0029.
 3. INSTALL FUSES 20A DNTD AXIS AMP. CHASSIS IN 4th AND 5th AXIS FUSE HOLDER.
 4. INSTALL JUMPERS ON 4th & 5th AXIS AMPLIFIERS IN J5 BETWEEN +LIMIT & -LIMIT (20 AWG RED).

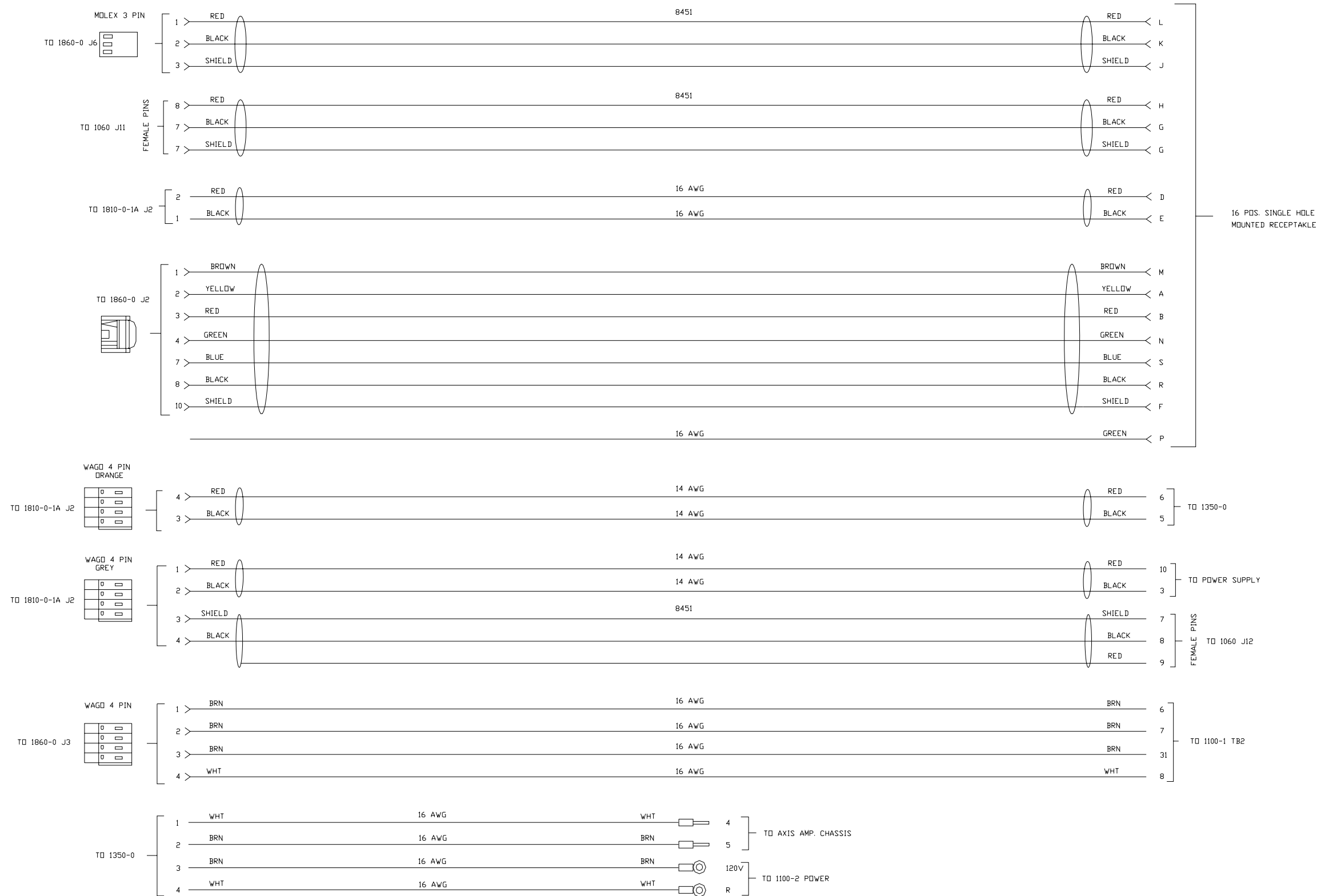
SERVO COOLANT WIRING DIAGRAM(4607-200)



Wrg_0179A_servo_turret_wiring_diagram



WRG_0179A_sht2of2_servo_turret_harness



WRG_0671A_4th_axis_harness_for_ac_brushless

